

# Making Solar Systems Smarter



solar<sup>edge</sup>

# Looking for Great Reasons to Go Solar?

## It will save you money

Power your home with solar energy to reduce your electricity bills or earn revenue, depending on your local solar scheme.

## It's a smart, long-term investment

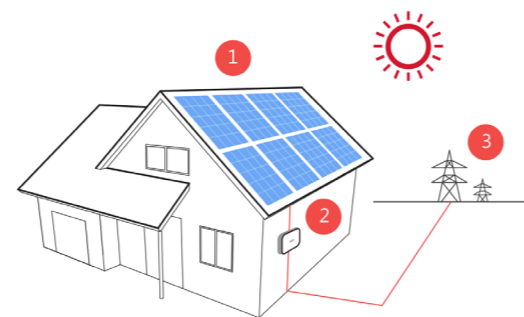
Install solar to enhance your property value and mitigate the effect of rising electricity costs.

## It just feels right

Lower your carbon footprint by generating and using clean, renewable energy.

With solar technology more affordable than ever, now is the time to go solar.

## How Does Solar Energy Work?



- 1 Solar panels convert sunlight into clean DC electricity.
- 2 A solar inverter converts the DC electricity into grid-compliant AC electricity to power the home.
- 3 Utility power is provided when needed e.g. at night or during peak demand periods. Excess electricity can also be exported to the utility for credit or revenue, depending on the available solar scheme.

# Smart Energy Solutions from SolarEdge

## Optimise your PV system with SolarEdge

SolarEdge achieves higher PV production than traditional systems. Each SolarEdge solar panel on your roof is pre-assembled with a power optimiser, for maximised output. A smart inverter manages your PV system, and supports future upgrades to extended capabilities such as battery storage and smart energy.



Smart panel + power optimiser

## Looking for energy independence? Try battery storage

The StorEdge® solution is designed to maximise your solar energy usage for increased energy independence and lower electricity bills.

Excess PV power is stored in a battery and used when needed to help meet your home consumption demands. The backup option allows you to stay connected even during power outages.



## Take control with the smart energy suite

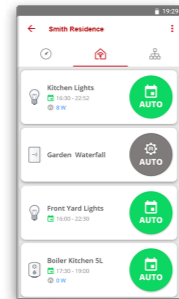
Cut your electricity bills by combining excess PV power with smart scheduling to heat your water. Control home appliances remotely using the mobile monitoring app.



# / The Complete SolarEdge Residential Solution

## Smart energy

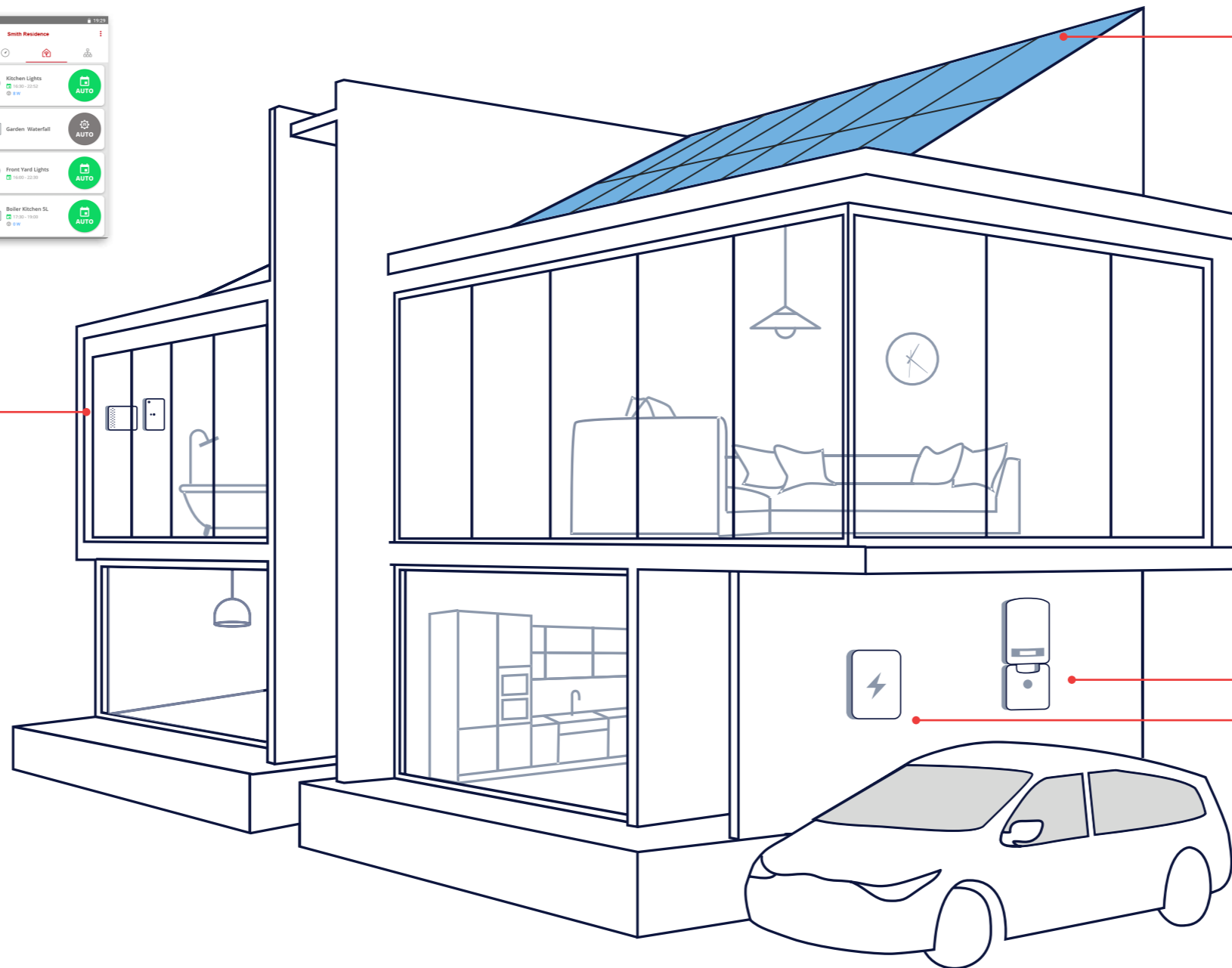
- Utilise excess solar energy to power heat pumps, to heat water, or to power lights and other typical home appliances
- Automatic, on-the-go control of your devices via SolarEdge's monitoring platform



Smart energy hot water



Smart energy relay



## Smart panels

- Premium SolarEdge smart panels, each pre-assembled with a power optimiser for greater energy harvest
- Elegant panel design with a black frame
- Excellent reliability, with superior quality control guaranteed by SolarEdge

## Power optimiser

- Assembled on each SolarEdge smart panel on your roof, for increased panel output, enhanced system safety, and real-time panel information
- Can also be installed on third-party panels, converting them into smart panels



## Inverter

- The brains of the PV system
- Efficiently converts DC energy to AC electricity for use in your home and utility grid
- Manages system production, battery power and smart energy



Single phase inverter with HD-Wave technology



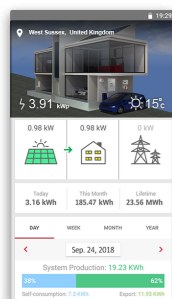
Three phase inverter



StorEdge inverter (with backup)

## Monitoring platform

- Free real-time monitoring of every panel in your system
- Monitoring of PV production, consumption and self-consumption, battery storage, and smart energy
- Automatic alerts
- Access from your mobile device, anytime, anywhere



## StorEdge®

- Store unused PV energy in batteries for times when solar energy is not available
- Use backup power during grid outages

## Compatible with

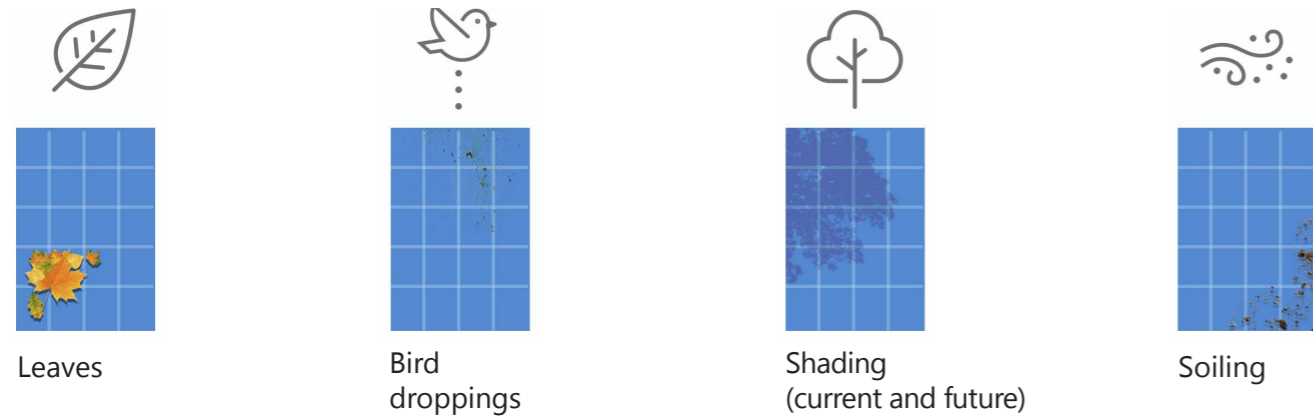
LG Chem RESU 7H/10H batteries

# Why Choose a SolarEdge System to Power Your Home?

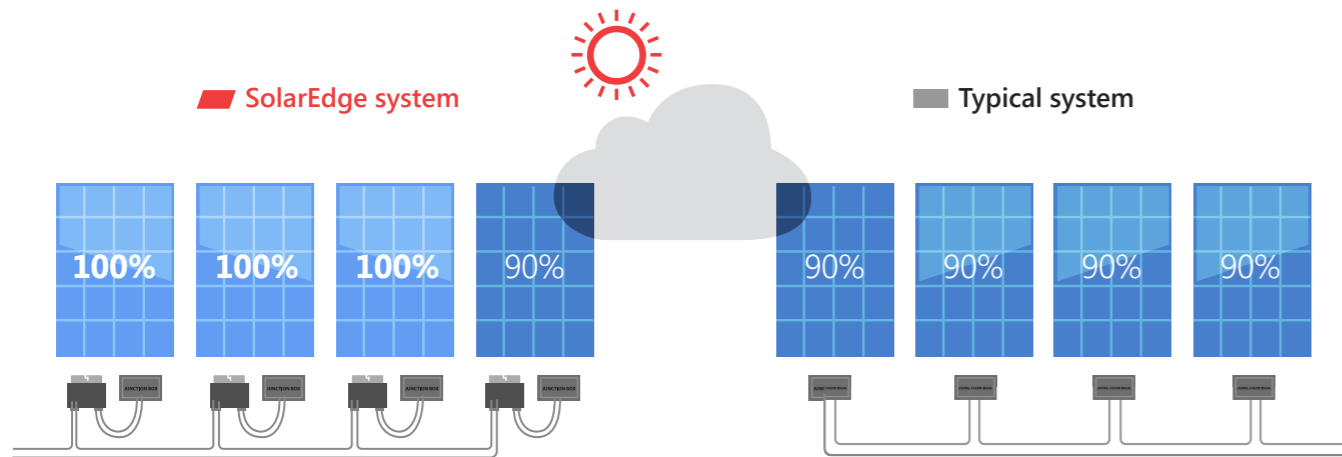
## More energy from the sun

More power = more savings on your electricity bill

In a PV system, each panel has an individual maximum power point. Differences between panels introduce power losses and can lead to underperformance of the entire system over time.



With traditional inverters, the weakest panel reduces the performance of all panels. With SolarEdge, each panel produces the maximum energy, and power losses are eliminated.



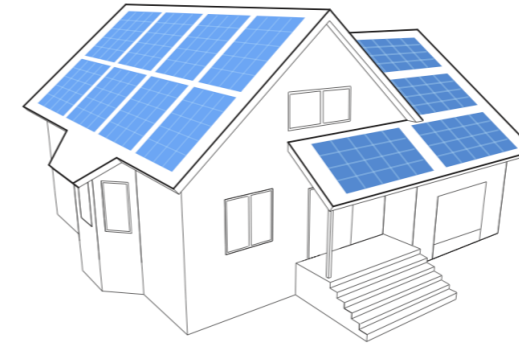
## Exceptional safety

SolarEdge's SafeDC™ feature is designed to reduce the PV array to a safe voltage upon AC or inverter shutdown, offering more protection to installers, firefighters, and your home. Compliant with the most advanced safety standards.

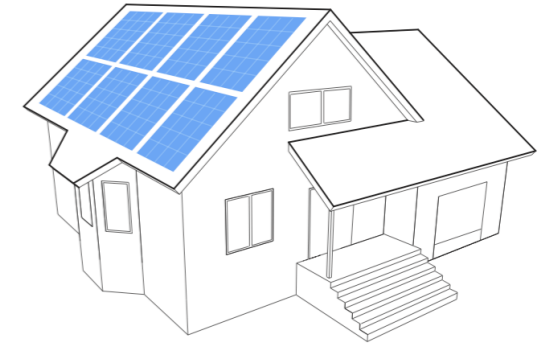
## More aesthetic rooftops

SolarEdge enables optimal rooftop utilisation, resulting in a more aesthetic design, for more energy and more savings.

### SolarEdge system



### Typical system



## Full system monitoring

A solar PV system without monitoring would be like a car without a dashboard. The SolarEdge monitoring platform provides free, real-time visibility into the performance of each panel on your roof. Access is available from any computer or mobile device, anytime, anywhere.



## Long-term warranties

SolarEdge products are field-proven and built for lasting performance. This enables us to offer warranties which are amongst the longest in the industry, including 25-year panel performance warranty and 12-year panel warranty, 25-year power optimiser warranty, and 12-year inverter warranty (extendable to 20 or 25 years for an additional cost). Protect your investment and enjoy peace of mind.









## Complete solution from a single, trusted vendor

From best-in-class smart panels to award-winning inverters and future-proofed capabilities such as battery storage and smart energy. Take advantage of the full residential system offering, including service and warranty, all from SolarEdge.

# About SolarEdge

SolarEdge is a global leader in smart energy technology. By deploying world-class engineering capabilities and a relentless focus on innovation, we create smart energy products and solutions that power our lives and drive future progress

-  SolarEdge
-  @SolarEdgePV
-  @SolarEdgePV
-  SolarEdgePV
-  SolarEdge
-  australia-info@solaredge.com

[solaredge.com](https://solaredge.com)

© SolarEdge Technologies, Ltd.  
All rights reserved.  
Rv: 07/2019/01/ENG AUS.  
Subject to change without notice.

 solar**edge**

